



Artist's impression. Neighbouring houses not shown

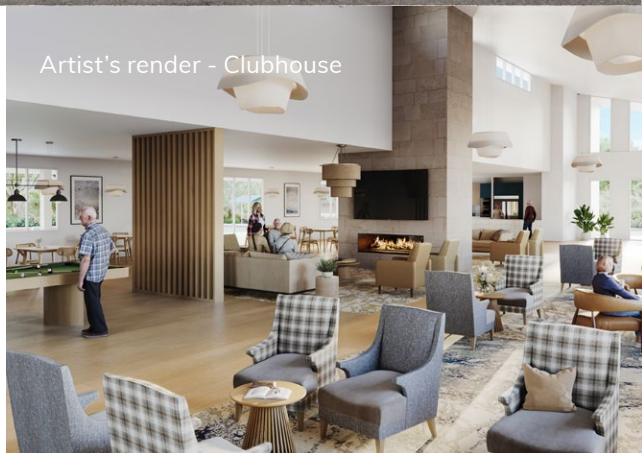


### Downsize without compromising on space

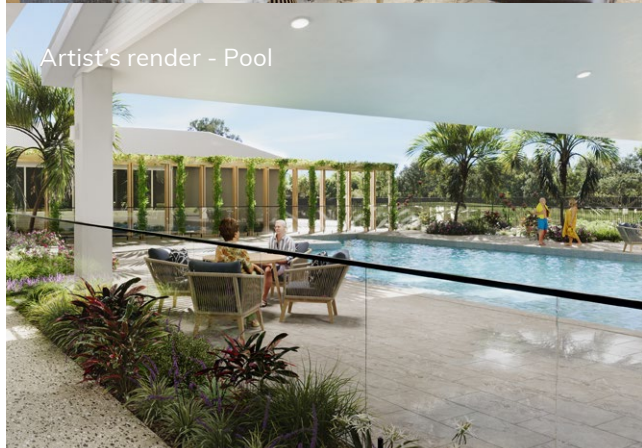
The Sunstone is perfect for those looking to downsize without compromising on space. Enjoy the entertainer's kitchen overlooking the living, dining and outdoor alfresco. Retreat to the master with walk-in robe and ensuite and utilise the flexibility of space with a guest bedroom, second bathroom, multi-purpose room, internal laundry, and double garage.

- Entertainer's kitchen
- Master with WIR and ensuite
- Guest bedroom and multi-purpose room
- Outdoor covered alfresco
- Double garage

Artist's render - Clubhouse

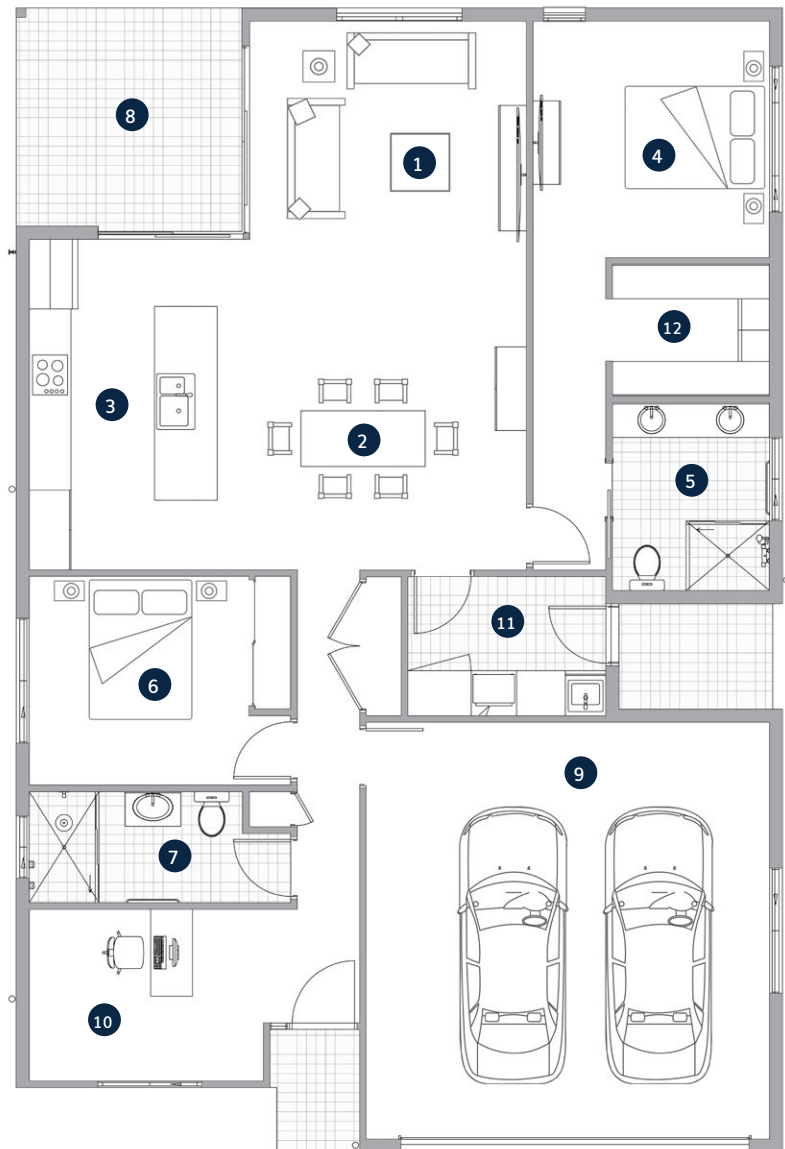


Artist's render - Pool



# Sunstone

- 1 Living
- 2 Dining
- 3 Kitchen
- 4 Bedroom 1
- 5 Ensuite
- 6 Bedroom 2
- 7 Bathroom
- 8 Alfresco
- 9 Double Garage
- 10 Multi-Purpose Room
- 11 Laundry
- 12 Walk-In Robe



Living	3.9m x 4.0m	Bedroom 2	3.2m x 3.0m
Dining	4.0m x 4.0m	Bathroom	3.8m x 1.6m
Kitchen	3.6m x 3.3m	Alfresco	3.2m x 3.1m
Bedroom 1	2.7m x 4.8m	Double Garage	6.0m x 5.8m
Ensuite	2.7m x 2.6m	Multi-Purpose Room	3.4m x 2.5m
Walk-In Robe	1.9m x 2.3m	<b>Total Area</b>	<b>180.7m<sup>2</sup></b>



\*The facade renders and floorplans are provided for illustrative purposes only. It may contain upgraded items/finishes not included as standard. For detailed home pricing, please talk to a sales consultant. All efforts have been made to ensure accuracy of this brochure at time of print.

A new way of living.

**HOMETOWN AUSTRALIA**  
COMMUNITIES