



Skillion Facade / Dark Scheme



2/3



1



2



2

Bright and spacious design

The Nine Mile design boasts a modern kitchen, bright and airy living areas, large alfresco, a generous master suite located at the rear of the home, and a guest bedroom with separate bathroom, making it a popular choice amongst downsizers! The design also includes the choice of a MPR, additional bedroom, or second living space giving you the option to downsize without compromising.

- Modern kitchen
- Open plan living and dining
- Master with ensuite
- Guest bedroom
- Covered alfresco



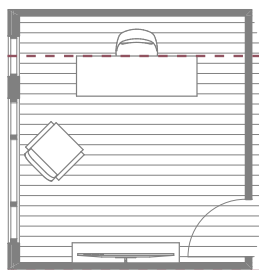
Portico Facade / Medium Scheme



Hip Facade / Light Cool Scheme

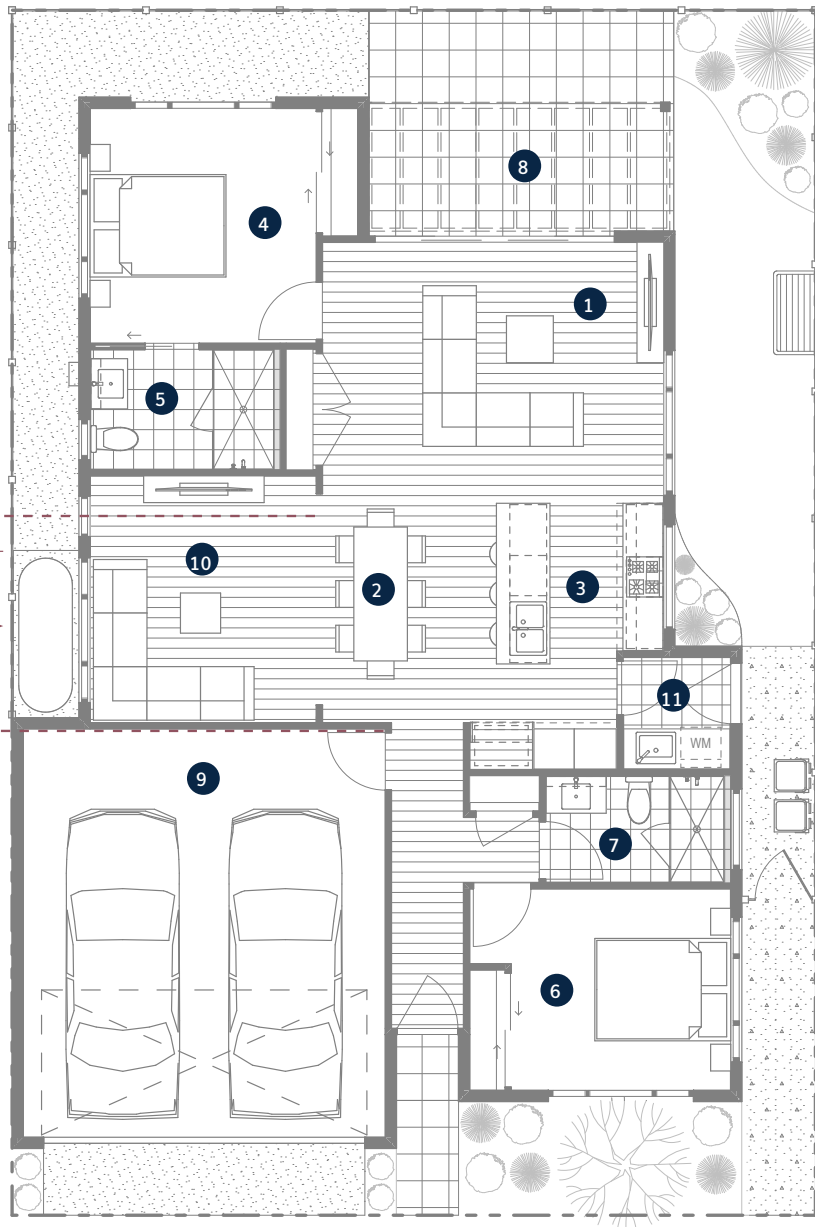
Nine Mile

- 1 Living
- 2 Dining
- 3 Kitchen
- 4 Bedroom 1
- 5 Ensuite
- 6 Bedroom 2
- 7 Bathroom
- 8 Alfresco
- 9 Garage
- 10 Multi-Purpose Room
- 11 Laundry



Upgrade Option 1
Study with swing door

Upgrade Option 2
Study with bifold door



Residence
Garage
Alfresco

101.9m²
33.0m²
15.3m²

Total Area

150.2m²



*The facade renders and floorplans are provided for illustrative purposes only. It may contain upgraded items/finishes not included as standard. For detailed home pricing, please talk to a sales consultant. All efforts have been made to ensure accuracy of this brochure at time of print.

A new way of living.

HOMETOWN AUSTRALIA
COMMUNITIES