



Skillion Facade / Light Warm Scheme



### Beautiful, spacious and modern living

What better way to start your day than in your gourmet kitchen overlooking the dining and living areas or planning your day from your alfresco! The Harbour offers beautiful, spacious and modern living. Enjoy the generous master suite located at the rear of the home for privacy, guest bedroom with separate bathroom, and the design option for a third bedroom, MPR, or additional living space.

- Modern kitchen
- Open plan living and dining
- Master with ensuite
- Guest bedroom
- Double garage

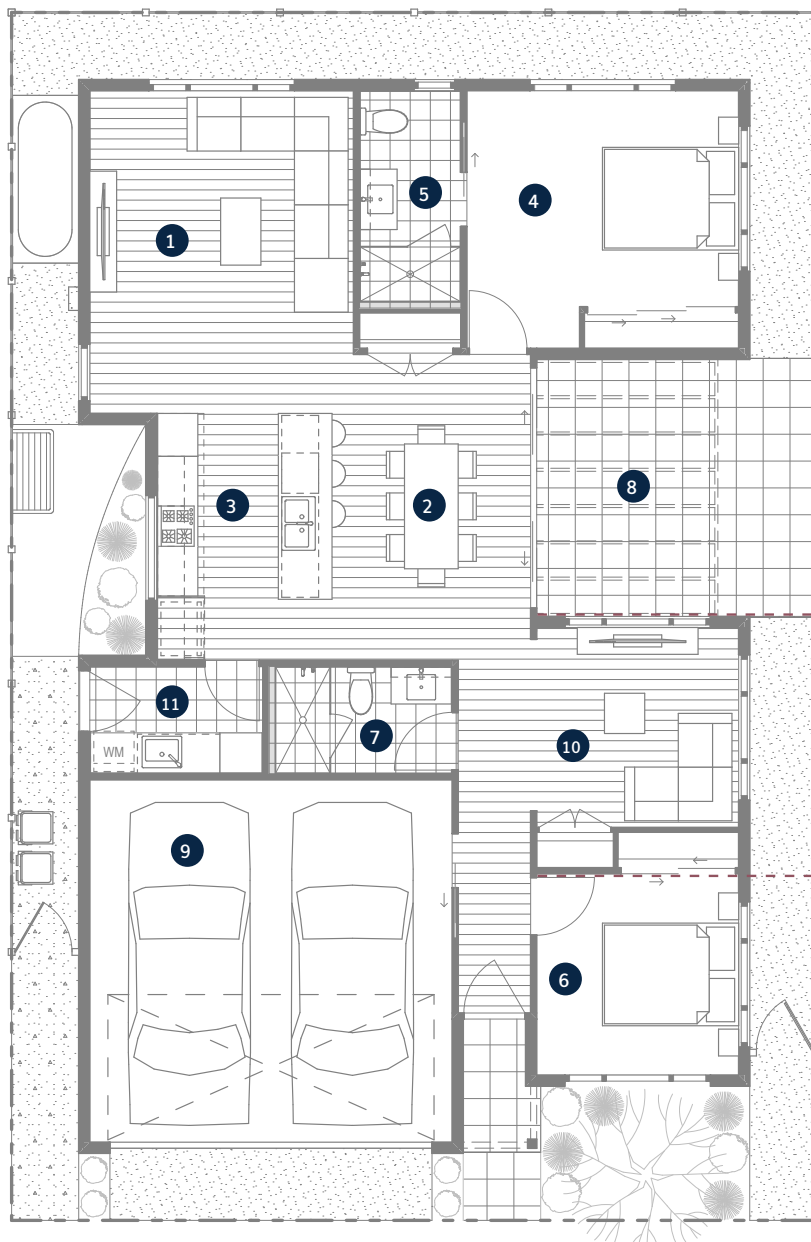


Portico Facade / Medium Scheme

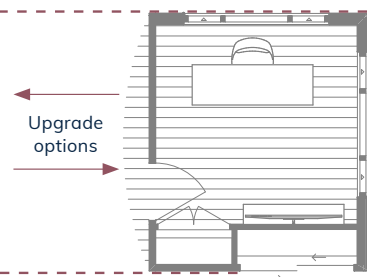


Hip Facade / Light Cool Scheme

# Harbour



- 1 Living
- 2 Dining
- 3 Kitchen
- 4 Bedroom 1
- 5 Ensuite
- 6 Bedroom 2
- 7 Bathroom
- 8 Alfresco
- 9 Garage
- 10 Multi-Purpose Room
- 11 Laundry



- Upgrade Option 1**  
Study with swing door
- Upgrade Option 2**  
Study with bifold door

Residence 100.3m<sup>2</sup>  
 Garage 29.2m<sup>2</sup>  
 Alfresco 16.1m<sup>2</sup>

**Total Area**

**145.6m<sup>2</sup>**



\*The facade renders and floorplans are provided for illustrative purposes only. It may contain upgraded items/finishes not included as standard. For detailed home pricing, please talk to a sales consultant. All efforts have been made to ensure accuracy of this brochure at time of print.

A new way of living.

**HOMETOWN AUSTRALIA**  
 COMMUNITIES